



# OMEEO REGION NEWS SHEET

SUPPORTED BY



Wednesday 4 September

AN OMEOSHIRE LIONS CLUB PROJECT

20 Cents

SERVING ENSAY, SWIFTS CREEK, OMEEO. BENAMBRA, DINNER PLAIN.

### NEWSHEET ENQUIRIES:

Email: [newsheet@omeeo.org.au](mailto:newsheet@omeeo.org.au)  
Phone : 5159 1515 ..... [www.omeeo.org.au](http://www.omeeo.org.au)  
Post: P.O. Box 182 Omeo 3898

### Medical Services-Omeo Region

For **URGENT** Medical Care call **000**  
Omeo Medical Centre  
Please Phone: **51 590 140**  
To arrange an appointment  
**Monday to Friday 8.00am—5.00pm**  
**Pathology:** Collection Monday to Friday  
8.00 am—9.00am  
by appointment only  
\*\*\*\*\*

### OMEEO COMMUNITY HUB

#### LUCKY NUMBERS

No 1 ... Petersen's Pokes

No 30 ... Cath Short

#### SNAPDRAGONS JOKE

YEAH, I HAD A FEELING IT WOULD  
NEVER WORK OUT BETWEEN YOU  
AND THAT PHILLIPS GUY...



### WEATHER

Wed 9-4	Thu 9-5	Fri 9-6	Sat 9-7	Sun 9-8	Mon 9-9	Tue 9-10	Wed 9-11
19° 7°	21° 14°	23° 18°	17° 9°	15° 7°	14° 8°	18° 6°	19° 8°

## District Diary

### Wednesday 4th September

Omeo to Bright Bus..departs Omeo 8.00am return 3.20pm  
Lego Club Omeo Library.....3.30pm-4.30pm

### Thursday 5th September

Omeo Opportunity Shop Open.....11.00am-3.00pm

### Friday 6th September

Omeo to Bright Bus...departs Omeo 8.00am return3.20pm

### Saturday 7th September

AA. meeting 1<sup>st</sup> Saturday of month, CFA rooms .....2.00pm  
Omeo Opportunity Shop Open.....11.00am-3.00pm

### Sunday 8th September

Anglican Church .....Ensay 9.00am ..Omeo 11.00am  
Catholic Prayer Meeting Omeo.....9.00am  
Winter Golf Comp .....12.00pm

### Monday 9th September

Omeo to Bright Bus depart....Omeo 8.00am return3.20pm  
The High Country Singers Omeo Shire Offices.....2-3.30 pm

### Tuesday 10th September

Listen with Lorna live radio O.S.C.A.R. fm ...12.00-2.00pm

NB.

One of the shortest will ever read:  
Being of sound mind, I spent all my money.

Amicus.



**Omeo Medical Centre**  
**Charles Luiz & Howard Goldberg**  
Please note some days are via telehealth  
Phone:5159 0140





**Darren Chester**  
Federal Member for Gippsland

**Shopping Locally**

Creates Local Jobs  
#lovegippsland

**1300 131 785**      **www.darrenchester.com**



**“SPEAK TO YOUR LOCAL PHARMACIST”**

186 Day Avenue. Omeo. 3898  
PH: 03 51591663 FAX: 03 5159 1686  
AFTER HOURS: 0474 017 705

EMAIL: omeopharmacy@gmail.com  
DELIVERY AVAILABLE



R.E.C. 17886

**INDUSTRIAL — DOMESTIC ELECTRICAL MOTOR REPAIRS**

CONTACT: TOM MITCHELL  
**5157 3200 — 0428 573 205**  
*“From The Lakes To The Alps”*

**Skicom Mt Hotham**  
CARPET/UPHOLSTERY/MATTRESS CLEANING SERVICE

Scott DeVries  
0429 723 274  
scottdevries2@icloud.com




STUBBORN DIRT, GRIT, STAINS, PET ODOUR, ALLERGENS... BE GONE!

**GARY'S TREE LOPPING**

- Tree Lopping
- Stump Grinding
- Hedge Trimming

**PH 0427 772 364**  
**garysmaintenance@gmail.com**





Omeo Benambra Football Netball Club  
17 hours ago · 🌐

Vote count day. Congratulations to all the award winners:  
12 and under Netball  
Best and Fairest: Holly Mitchell  
Runners up : Liv Symons

17 and under Netball:  
Best and Fairest: Ryli Ayton  
Runners up: Caitlyn Jones

Junior football  
Best and Fairest: Colten Pendergast  
Runners Up : Rayden Pooley

Omeo-Benambra has avenged last year's grand final loss to rival high country club Swifts Creek in devastating style. See how it happened >>> [bit.ly/3Xc4GVY](http://bit.ly/3Xc4GVY)



OMEO • BAIRNSDALE • MALLACOOTA • MELBOURNE

**Daily Services between  
Melbourne - Bairnsdale - Omeo**  
**Bairnsdale Depot - Grinters Transport,**  
16 Lawless Street, Bairnsdale, 3875

**Melbourne Depot - Vic Freight Specialists, 13B,**  
13-17 Progress Street, Dandenong, 3175

**Omeo Depot – Omeo Welding & Engineering &  
Equipment Hire, 87 Bilton Street, Omeo, 3898**  
Phone: (03) 5152 5778 Fax: (03) 5152 3329

Mobile: 0418 516 857 Email:

admin@grinters.com.au

Pallets . Parcels .

- ◆ Livestock . Hay .
- ◆ Machinery . Bulk
- ◆ General . Wool
- ◆ Refrigerated Freight . Farm Equipment

**Leaves 9.30am from Bairnsdale to Omeo**



### *Jens and Maureen Hudson*

18 Great Alpine Road Lucknow 3875  
Phone : Maureen 0402 001 593  
Jens 0402 006 268

Many fabrics to choose from for all your  
furnishing needs Over thirty years in  
Business and 76 years' experience in the  
industry, between us we can help you.

Including car and motorbike seats

- Car roof linings replaced
- Cushions made to size
- Foam cut to size
- Toyota Land Cruiser seat foams



- Groceries
- Meat
- Fruit & Veg
- Gas Bottles
- Bottle Shop
- Post Office

- Fuel ULP & DSL + Winter Mix
- Breakfast & Lunch Daily until 2pm
- Fish & Chips - Friday Nights 4pm-7pm
- Eat In or Take Away
- Personalised Weekly Orders of Meat, Fruit &  
Vegetables

Drop in and meet our awesome team to grab a  
bite to eat or stock up on supplies for your  
adventure around Sunny Benambra

#### TRADING HOURS

Weekdays 8am - 5:30pm

Weekends 9am - 5pm

Public Holidays 9am - 5pm

**03 5159 9209**



Bore pumps Sales and servicing,  
Mains and solar operated

TV Installation and servicing of both  
Satellite & "Terry"

Generator - Sales/Hire/Installation/

Mains to Generator  
changeover switches and inlets

Electrical Appliance Repairs/Maintenance

Electrical Installations  
Industrial to domestic..

Competitive rates  
and servicing the Omeo region

**Contact Jeremiah on 0418 909 978**

**Switch all  
paper  
products in  
your life to  
100% recycled**



**Did You Know?**

Toilet paper, printing paper and almost all other paper products are available as recycled options.

For more information contact Council or visit our A – Z - Where to next? on our website.



**EAST GIPPSLAND  
SHIRE LIBRARIES**



# LEGO Club 2024



**Junior LEGO enthusiasts are invited to attend our after- LEGO Club school sessions.**

The sessions incorporate freestyle activity and themed construction activities.

**Donations Welcome**

The library will gladly accept donations of old or new LEGO brand pieces for our LEGO Club collection.

For more information, phone **51524225** or ask in person at the library about these **FREE** sessions.

**Omeo Service Centre**

3.30pm-4.30pm

Every Wednesday

*Except School Holidays*



**All Children must be accompanied by an adult**

**ALL SCREENS GIPPSLAND**  
SALES - SERVICE - REPAIRS

**GLASS & GLAZING –  
WINDOW REPLACEMENTS**

– SHOWER SCREENS – ROBE DOORS –  
SECURITY DOORS – FLY SCREENS &  
MORE

Servicing - Ensay, Swift Creek, Omeo,  
Benambra & Dinner Plain

**OFFICE: 51526791**

JUSTIN: 0457775168

emailsales@allscreensgippsland.com.au

[www.allscreensgippsland.com.au](http://www.allscreensgippsland.com.au)

Mark Trafford **TRAKERS** 0428 264 480  
13 Jobling Street **TRANSPORT** mark@tectronix.com.au  
Bethanga Vic 3691  
ABN: 13 946 732 134 **&**  
**WATER CARTAGE**

**Specialising in the following services**

Potable Water Cartage

Transport of general freight, Agricultural goods,

Motorbikes, Quad bikes, Mowers

Small tractors, SXS's, Machinery parts,

Bagged grain and much more.

Reasonable rates

Truck equipped with 1,000 KG. tailgate loader

Full tarpaulin if required,

ability to load and unload goods

with 1.6 tonne all terrain pallet jack.

Truck capabilities: 6.tonne, 4x4

Tray size: 5.5 mtrs x 2.4 mtrs.

Flat top trailer 6.3 mtr x 2.5 mtr

Transporting weekly to Omeo and district  
from Albury/Wodonga Corryong

Orders phoned or emailed by Tuesday

11 am For delivery on Wednesdays

Contact Mark for delivery charges on

**0428 264 480**

Mark @tectronix.com.au



1st Omeo Football Team 1890 - Note size of Pine Trees in the park.

## Professional Cleaning Services East Gippsland

Let us do the cleaning so you can do the living!



### Cleaning Services

Houses  
Commercial  
End of lease  
Air BNB  
Offices

### Areas

Benambra, Omeo  
Swifts Creek, Mt  
Hotham, Dinner  
Plain and  
Surrounding areas.

### Prices

All places are  
quoted for free, or  
we can negotiate a  
competitive hourly  
rate.

Professional cleaning service in the area.

Contact Maïke Cruze | 0474 552 617 | eastgippslandcleaning@gmail.com |

# NEW RUSH BREWHOUSE

## Opening Hours

Friday from 5pm  
Sunday Breakfast 8am 12pm  
Sunday Lunch 12- 2pm



## **SUBSCRIBERS PLEASE NOTE**

www.omeo.org.au/newssheet

Phonewww.omeo.org.au/newssheet

Phone : 5159 1515

**All articles for the newssheet to be in  
by 12.00 noon on the  
Monday before publication.  
(Wednesday)**

Prices for Newssheet Ads are as follows

Full Page A4 \$40

1/2 Page.\$20.00

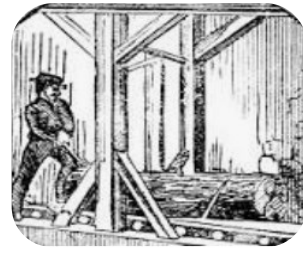
1/4 Page.\$10.00

1/8 Page.\$ 5.00

Please state what size you require &  
**How Long /Dates you would like it  
advertised for.**

**Thank You**

**PH : 5159 1515**



## **For all your timber milling needs**

We have years of experience in the trade and we come to your farm with our portable Lucas Mill, we can also do small excavation, pipe laying or farm improvement work.

Please call, **Tim Starry** on

**0457 544 020**

## **Hay for Sale**

Round bales  
Second Cut Lucerne  
\$150 +GST

Stephen Richardson  
Swifts Creek

Phone 0407 803 830



## **PAYNES HUT ACCOMODATION**

*SITUATED ONE HOUR N/W OF OMEO  
OPENING FOR THE SEASON*

***FROM 1st OCTOBER 2024***



*Enjoy some one cooking for you, or cook  
for yourselves in our outdoor kitchen.*

*visit the website*

*payneshut@skymesh.com.au or phone*

***0351597255***



**PHYSIOTHERAPIST**

**Robert Hughes is a qualified and extremely experienced Physiotherapist from McMillan Chiropractic**

**Robert will be available at Swifts Creek Bush Nursing Centre Wednesday, 18th September, 16<sup>th</sup> October, 13th November 2024**

**FOR APPOINTMENTS Please phone 5150 2430 NO GP Referral required.**



**SWIFTS CREEK BUSH NURSING CENTRE**

T. 03 5150 2430 F. 03 5150 2439  
Email. [susan.carroll@gha.net.au](mailto:susan.carroll@gha.net.au)

17 McMillan Street, Swifts Creek 3896  
Open 9am until 5pm Monday to Friday  
9am until 11am Weekends

Emergency on-call available after hours  
Nursing services: No appointment required.

You are required to pay an annual membership fee or otherwise a non-member fee.

A Rural and Isolated Practice Nurse is available for wound infections.

Assistance with Virtual Emergency consults.

Pathology: Every Weekday, 9am until 9.45am

Women's Health

Ante/Postnatal Care

Suturing

Memberships

Family \$140, Single \$70 due 31<sup>st</sup> July each year

Hire of Equipment

Home visits if required.

24hr Bp monitor

Immunisations

Webpage – [https://](https://www.swiftscreekbushnursingcentre.com.au)

[www.swiftscreekbushnursingcentre.com.au](https://www.swiftscreekbushnursingcentre.com.au)



**Ensay Bush Nursing Centre**

T. 03 51502416 F. 03 51502419

email: [ensaybnc@gha.net.au](mailto:ensaybnc@gha.net.au)



Open 9am until 3pm Monday to Friday

or 8.30am-9am and 3-3.30pm emergencies only

Nursing services: No cost No appointment required.

Pathology Monday to Friday 9 am until 10.30 am- No cost. No appointment required

Footcare: Approximately 6 weekly, \$15.00 cost ring for an appointment

Walk and morning tea: 1<sup>st</sup> Friday of each month may include some craft activities, no cost only delicious homemade cakes etc.

RFDS mental wellbeing: Fortnightly face to face and telehealth model.

Memberships: \$50.00 family and \$25.00 single due 31<sup>st</sup> of July each year, pro-rata payments accepted for new members.

AGM: Occurs on the second Monday of October all welcome, new members to the COM welcome.

Follow us on facebook and our webpage for events and employment opportunities.

WEBPAGE

<https://www.ensaybushnursing.com.au>

**5 Great Alpine Road  
Ensay, VIC. 3895**

Benambra CWA Presents



## SPRING FAIR

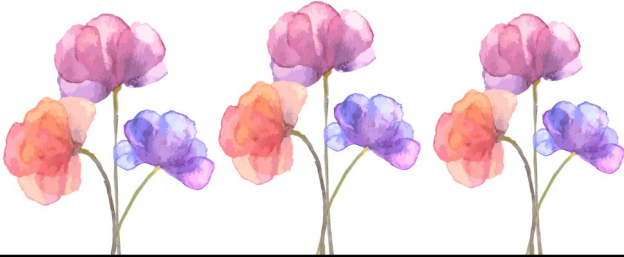
Date: 6th October Time: 11am till 2pm

Come to 'Dejalis' Benambra park for a Spring Fair with games, Apple bobbing, Donuts on a string, face painting and more.

All activities covered with a Gold coin donation.

CWA providing BBQ lunch, Cake Stall, Fairy Floss and Popcorn at a small cost.

**CASH ONLY EVENT.**



## REQUEST FOR TENDER

The following Tender closes at  
**12.00pm on Wednesday 18  
September 2024:**  
CON2025 1706

### **Provision of Electrical Services**

Tender documentation is available at  
[tenderlink.com/egipps](https://tenderlink.com/egipps)

Invitees must submit their Tender  
electronically via TenderLink

For enquiries phone East Gippsland  
Shire Council on

**03 5153 9500**



## SWIFTS CREEK BUSH NURSING CENTRE INC.

ABN: 78 513 040 891

INCORPORATION No A0011271F

### **ANNUAL GENERAL MEETING**

**When:** Wednesday 9th October 2024 @ 5.30pm

**Where:** Interested parties may participate in the AGM in person at the Swifts Creek Bush Nurse Centre or Via video

conference on Zoom. If you require the Zoom link please contact the centre.

#### Committee members for renomination

Pauline Canfield -renominating

Michael Cawley –renominating

#### Committee member vacancies:

No vacancies at this time

RSVP please Contact: Bush Nursing Centre: 03 5159 4210 or the  
SCBNC email: [Secretary.scbnc@gmail.com](mailto:Secretary.scbnc@gmail.com) for access to the Zoom link.





## Golf Club Results Sunday 1/9/2024

**18-hole stableford**

**Open to all members & casuals**

**12.30pm for 1pm hit off.....*same next week 8/9/2024***

<b><u>Place</u></b>	<b><u>Points</u></b>	<b><u>Player Name</u></b>
Winner	29 <i>(on count back)</i>	Andrew Cogger
2 <sup>nd</sup>	29	Pat McCormack
3 <sup>rd</sup>	24	John Reid
NAAGA	16	Daryl Shepherd



Nearest to Pin 7<sup>th</sup>  
Nearest to Pin 2<sup>nd</sup> shot 6<sup>th</sup>

Andrew Cogger  
Pat McCormack

## COMMUNITY READING EVENT— ( Book Week )

### ***THANK YOU***

The Omeo and Swifts Creek Book Week Walk sends a strong and important message to the children of our area, that the wider community embrace the importance of reading and are prepared to invest the time to read to them.

Thank you to the following people who made this possible by so willingly giving up part of their morning to read to pre-school and school students, having fun and helping us to celebrate book week in the High Country.

Carole Pepper, Phil Chapman, Buddah Richards, Sharon Parker, Jason Darby, Daryl Shepherd (Shep), Leanne Stedman, Trudy Anderson and Nat Bricknall.

Also thanks to Omeo Rural & Hardware, Omeo Makers Market, Omeo Community Hub, Swifts Creek General Store, Swifts Creek Community Centre and The Junction Hotel for providing the venues for the book readers.

### ***Schools as Hubs***

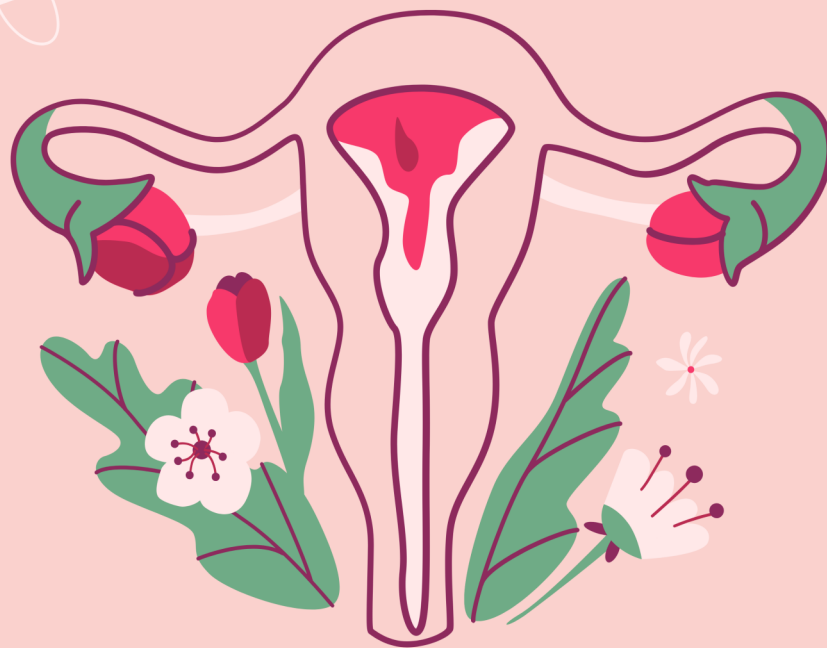
### ***High Country***



# WOMEN'S HEALTH NIGHT

"SCREENING DOWN UNDER"

19th September @ 6pm



Let's talk about Cervical Screening,  
Breast Screening & Bowel Screening

@ Swifts Creek Bush Nursing Centre

RSVP please call 5150 2430

Childcare, Food & Beverages provided



# WINE TASTING



Fresh air Cafe  
hosting a wine tasting night

Friday 27th of September 2024 6pm.

Cheese plater for two with  
sparkling red taster on arrival.

Tasting starts at 6:30 pm featuring  
Michelini + Gapsted wines from the  
Buckland Valley just over the hill.

All wines will be pared with finger  
foods to enhance your tasting  
experience.

\$65 per head  
limited seating, so get in early to  
avoid disappointment  
call 51591683



# LET'S CELEBRATE!!!

## SWIFTS CREEK HALL

### UPGRADE

SATURDAY  
21ST  
SEPTEMBER  
2024

- ✓ 5.00pm – 6.30pm  
Free BBQ with the Swifts Creek Football Netball Club
- ✓ 7.00pm – til late  
Free concert with **MOLLIMOR**, Celtic music band
- ✓ BYO
- ✓ No bookings required
- ✓ Next Project a new roof !! Donations warmly received.

This project is jointly funded by the Victorian Government and Commonwealth Government under the Commonwealth-State Disaster Recovery Funding Arrangements

